



# GAT MONTHLY MEMBERSHIP PROGRESS REPORT

Results as of: 3/31/2026

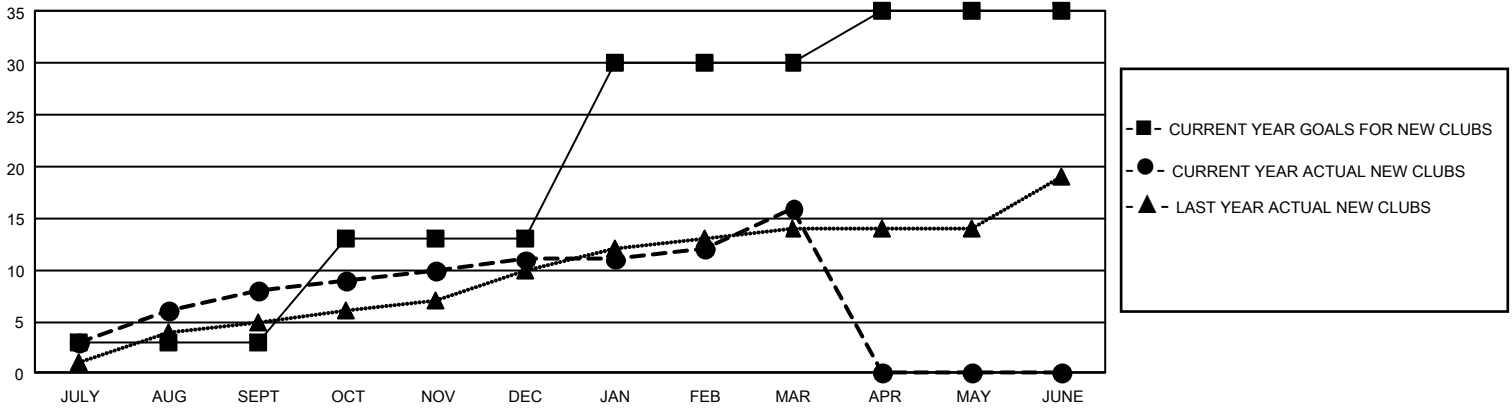
## GMT Constitutional Area 1, Group F

REPORT DOES NOT INCLUDE CLUBS IN UNDISTRICTED AREAS.

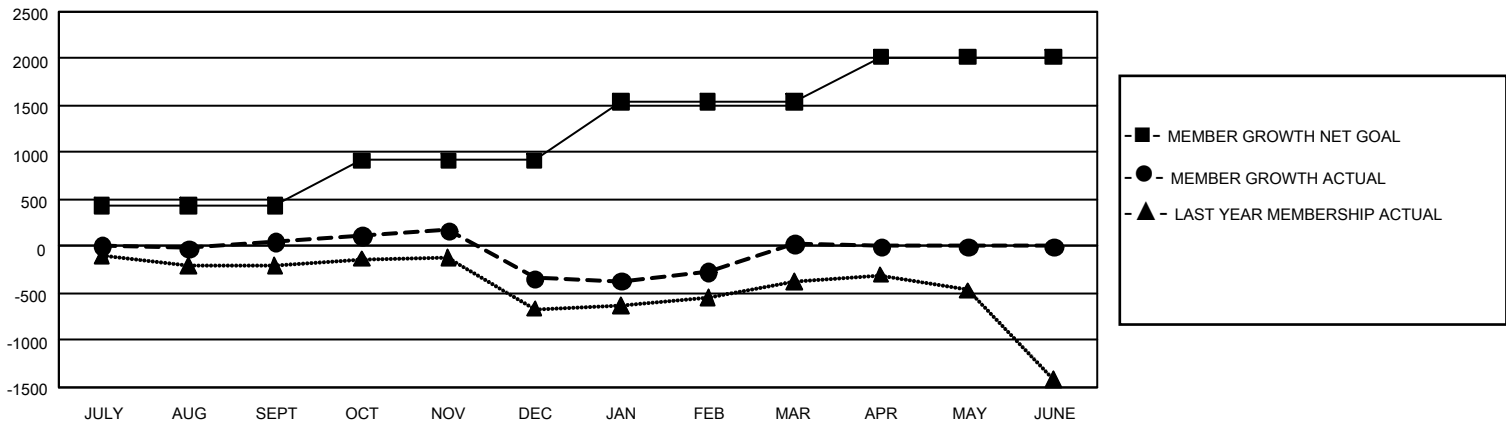
Clubs			
RESULTS FOR 2025-2026			
QUARTER	NEW CLUB GOAL	NEW CLUBS	DROPPED CLUBS
JULY/AUG/SEPT	9	8	7
OCT/NOV/DEC	30	3	15
JAN/FEB/MAR	51	5	0
APR/MAY/JUNE	15	0	0

Members			
RESULTS FOR 2025-2026			
QUARTER	MEMBER GROWTH NET GOAL	MEMBER GROWTH ACTUAL	DROPPED MEMBERS ACTUAL (including transfers)
JULY/AUG/SEPT	431	1,124	917
OCT/NOV/DEC	487	901	1,213
JAN/FEB/MAR	623	1,230	658
APR/MAY/JUNE	475	0	0

GOALS AND ACTUAL NEW CLUBS CUMULATIVE



GOALS AND ACTUAL MEMBERS CUMULATIVE



<b>DROPPED CLUBS: 22</b>  <b>DROPPED MEMBERS</b> DECEASED 387 CLUB CANCELLED 233 OTHER 2,165 <b>TOTAL 2,785</b>	716 CLUBS OF 1,368 ADDED 1 OR MORE NEW MEMBERS	<b>GENDER DISTRIBUTION</b> MALE 22,502 (58.26%) FEMALE 16,093 (41.66%) NON BINARY 3 (0.01%) PREFER NOT TO ANSWER 27 (0.07%)
	<a href="#">CLICK HERE FOR CUMULATIVE MEMBERSHIP DATA</a>	TOTAL FAMILY UNIT MEMBERS 7,333 FAMILY MEMBERS PAYING HALF DUES 3,794